

Sierra Pacific Industries Impacts on Wildlife Habitat West of Mt. Lassen



Compiled
by Vivian
Parker
Dec. 2008

Above:

This photo is SPI's version of how things are looking up in the Lassen country...This photo will have been taken from the west, looking east towards Lassen National Forest lands and Mt. Lassen and Lassen Volcanic National Park. SPI's lands are not visible, as they would be behind the photographer's back. But SPI uses this photo in literature it hands out to demonstrate what careful stewards of the land they are (from SPI's website).

Below:

Moving backwards to the west, now compare the aerial view across SPI's lands...(arrow points to Mt. Lassen on the horizon).

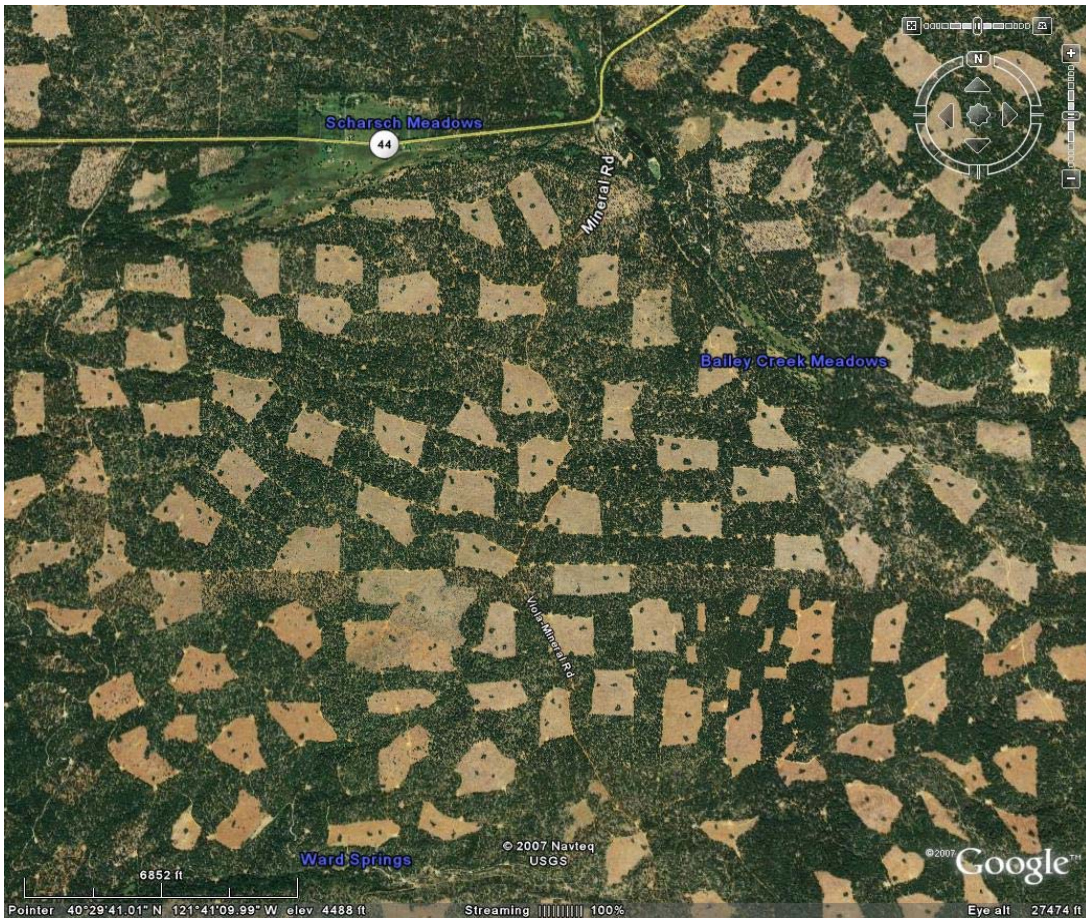


Below:

This is how it looks on the ground (Mt. Lassen in background left). SPI cuts right up to the National Forest boundaries...there is not much mature forest habitat left, just a little strip between the alpine regions of the park, and a band of NF lands. This area contains documented occurrences of snowshoe hare, SN red fox, wolverine, spotted owl, goshawk, osprey, bald eagle, fisher, and is biologically a transition zone between the Cascades and the Sierra Nevada, with many unique assemblages & rare species once found here.



This is the view from a Google Earth satellite image—next page, below:



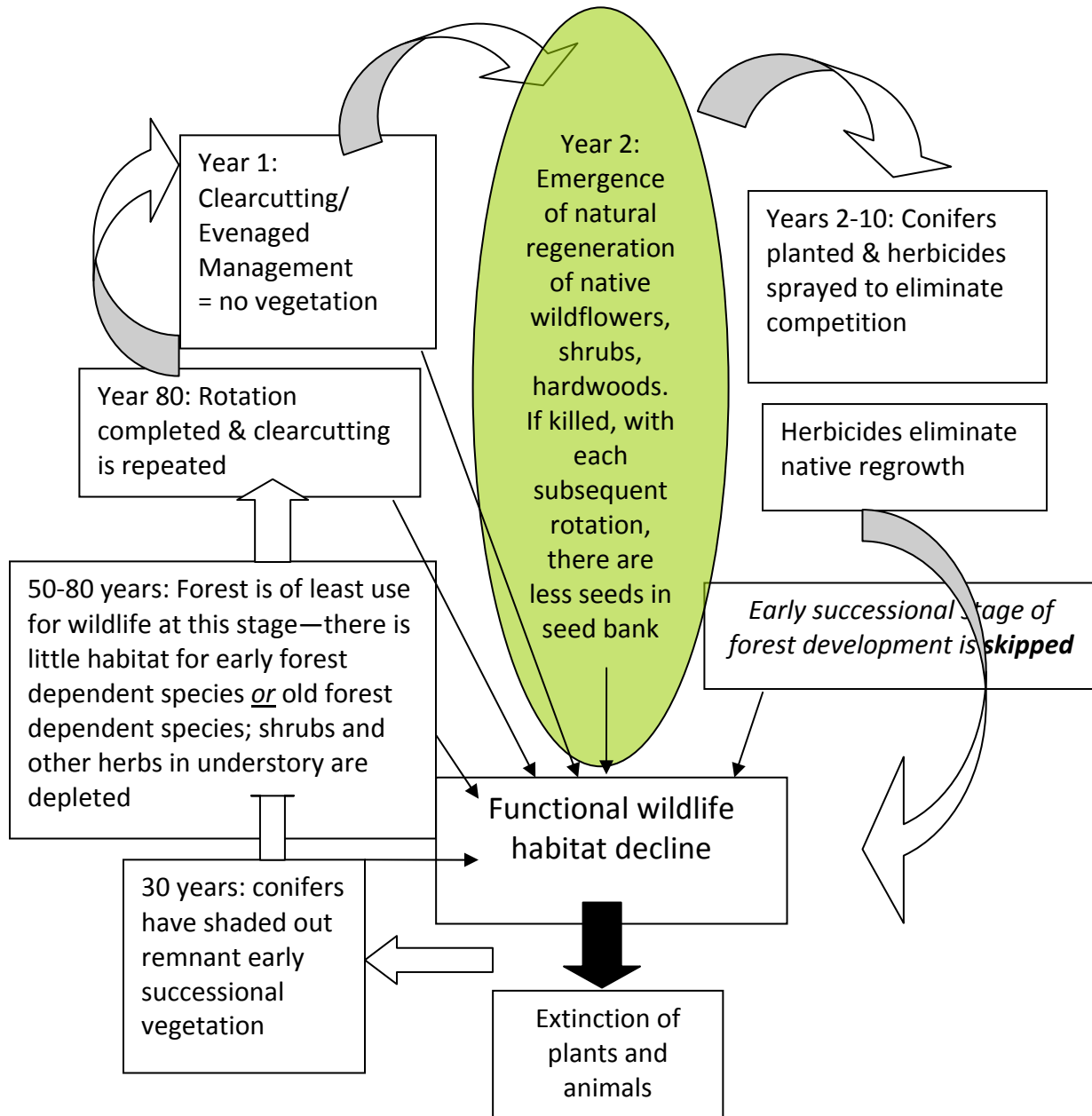
This is how most of SPI's land looks like between the north and south forks of Battle Creek....the site of a \$43 million salmon and steelhead recovery project in Shasta and Tehama counties. (Note that this image is at least five years old; hundreds of acres of clearcuts to the south of this area are not shown in Google Earth images yet). Mt. Lassen is due East (outside photo).

In spite of the focus on restoration, there has been no oversight by any public agency concerning the cumulative impacts from the amount of clearcutting going on in the headwaters of this watershed. The project is one of the largest cold water anadromous fish restoration efforts in North America. The streams in this watershed are known for their relatively clean water and cold temperature fed by numerous springs.

SPI has clearcut approximately 5,000 acres in the watershed since 2000. They also applied 62,621 pounds of herbicides in the Battle Creek Watershed during this time. Of this, 17,834 pounds were applied aerially, virtually eliminating the entire home ranges for myriad numbers of species of animals and eliminating the early successional plant community that forms the foundation of the forest food web. This total does not include additional spraying in 2007 and 2008. SPI has submitted plans to CDF for an additional 2,000 acres of clearcuts in this watershed.

The following graphic illustrates the pathways in which SPI's industrial activities are entraining species towards extinction on nearly 2 million acres of biologically important forests in Northern California:

SPI's Evenaged Management Regime: Long Term Impacts Upon Wildlife and Native Vegetation



The consequences of permitting SPI to continue this level of clearcutting in the watersheds of Northern California's forests are likely to be long term and irreversible. We can expect increases in wildfire and carbon emissions, hotter and drier climate changes, extinctions of plants and wildlife, and irreparable loss of esthetic and recreational values as a result.